

FEATURES AND BENEFITS

- Type A fasteners are designed for use in wood framed buildings.
- Fasteners are also used in retrofit applications in which existing screws have stripped/backed out & need to be replaced with a larger diameter.
- 5/16" Cupped HWH ZAMAC Zinc-Aluminum Alloy provides lifetime protection against red rust on the head & washer face. A written warranty is available upon request.
- The head & washer face captures the rubber EPDM washer even when driven at an angle & are designed to maximize Pull over strength.

FOR PROPER INSTALLATION, THE USE OF IMPACT DRIVERS ARE NOT RECOMMENDED FOR POWDER COATED OR ANY WET PAINTED FASTENER.

PULLOUT & PULLOVER VALUES ARE DETERMINED IN THE ST FASTENING SYSTEMS ENGINEERING LABORATORY USING STEEL PANELS/FRAMING & WOOD DENSITIES WHOSE STRUCTURAL PROPERTIES ARE FOUND IN PRESENT DAY PRODUCTS.

SIZE	CARTON QTY.	WEIGHT/M
14-10 x 1-1/2" A	1500	23.0

PULL OUT STRENGTH LBS. ULT.			
SUBSTRATE	GAUGE	THICKNESS	VALUE
HRS Primed Only	16	.060	1181
HRS Primed Only	14	.075	1265
HRS Primed Only	12	.105	2143
3/4 PLY	N/A	FULL	707
5/8 PLY	N/A	FULL	391
1/2 PLY	N/A	FULL	378
7/16 OSB	N/A	FULL	238
2x Y.PINE	N/A	1"	828
2x Y.PINE	N/A	1 1/2"	1669
2x SPF	N/A	1"	594
2x SPF	N/A	1 1/2"	1235

PULL OUT STRENGTH LBS. ULT.			
SUBSTRATE	GAUGE	THICKNESS	VALUE
AZ55 GALVALUME	29	.014	886
AZ55 GALVALUME	26	.018	1287
AZ55 GALVALUME	24	.024	1572
AZ55 GALVALUME	22	.030	2029

- NOTES**
1. HRS (Hot Rolled Steel)
 2. Pull over values calculated with EPDM rubber washer assembled to cupped head screw with .630" washer face.
 3. All strength values shown are ultimate values, express in LBS. Apply an appropriate safety factor to obtain design limits.
 4. **The value tabulated is the force at which the ZXL head breaks from the carbon steel body.

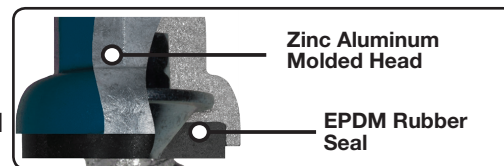
ZXL™ TAPPING WoodBinder®



**40 YEAR
WARRANTY
LIFETIME**



HEAD STYLE
5/16" CHWH
DRILL POINT
30° SHARP POINT
MAJOR DIAMETER
.254/.248
MINOR DIAMETER
.185/.178
WASHER FACE DIAMETER
.630
HEAD ACROSS FLATS
.305/.311
ULT. TENSILE STRENGTH
2240 LBS.
MIN. TORSIONAL STRENGTH
125 IN-LBS.
NOM. SHEAR STRENGTH
2997 LBS.

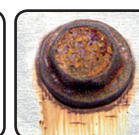


The Zinc-Aluminum alloy HWH prevents red rust from ever starting. ST Fastening Systems spring retainer sockets are designed to allow for the added thickness of the powder coat and are recommended.



TYPE A

The Type A is designed for wood. See Catalog page 1 for proper drill bit sizes.



No Red-Rust Guaranteed!