

FEATURES AND BENEFITS

- Manufactured from EPDM or silicone rubber, Retrofit Roofjack™ RD is compounded for maximum resistance to ozone, UV light, & temperature extremes.
- Flexible aluminum base will allow the flashing to conform to any metal roof configuration. Pipe location can be centered in the flat of the panel or the rib. Urethane sealant & self-drilling screws complete the installation
- Retrofit Roofjack RD are well marked so they can easily be cut with shears to fit exactly the pipe size used.
- Stainless steel teeth grip the material & secure it tightly.

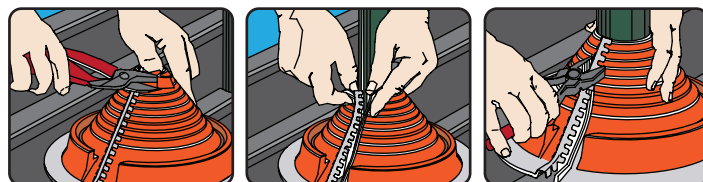
RETROFIT RoofjackRD™



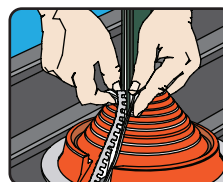
	PIPE SIZE	BASE DIAMETER	COLOR MATERIAL	CARTON QUANTITY	WEIGHT PER CARTON
#1	3/4" - 2-3/4" (19 - 70 mm)	6-3/10" (160mm)	Black EPDM/ Grey EPDM/Red Silicone	15	2.5
#2	2" - 7-1/4" (50.8 - 184 mm)	10-3/4" (273.1mm)	Black EPDM/ Grey EPDM/Red Silicone	10	8.0
#3	3-1/4" - 10" (95 - 254 mm)	14-1/2" (641.4mm)	Black EPDM/ Grey EPDM/Red Silicone	10	15.5



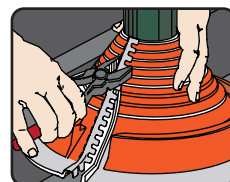
EASY INSTALLATION



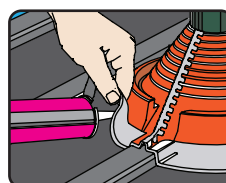
1. Using tin snips, cut the cone to fit pipe.



2. Wrap Retrofit around pipe, join the interlocking teeth



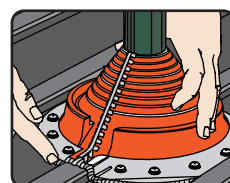
3. Squeeze joiner tightly with pliers to crimp



4. Apply sealant shape Retrofit to roof



5. Fasten Retrofit to roof



6. Apply additional sealant to mechanical locking joint seam

	EPDM 500	SILICONE
Advanced Ozone Resistance Tested to...	70 hr @500 pphm	70 hr @ 500 pphm
High Temperature Resistance Tested to Intermittent Continuous	+135°C (+275°F) +100°C (+212°F)	+260°C (+500°F) +225°C (+500°F)
Low Temperature Resistance tested to...	-55°C (-65°F)	-74°C (-100°F)
Tensile Set Maximum... Compression Set Maximum...	10MPa (1450psi) 25%	5MPa (700psi) 50%