



PRODUCT CATALOG



HILLMAN™

Table of Contents

SteelBinder

MAXX SteelBinder.	6
HG SteelBinder.	6
ZXL SteelBinder.	7
ZXL HG SteelBinder.	7
HWH SteelBinder.	8
Eclipse SteelBinder.	8
TAPPING SteelBinder.	9
ZXL Tapping SteelBinder.	9

WoodBinder

Kwikseal MB WoodBinder	12
#12 Type 17 WoodBinder	12
ZXL: #12 T-17 WoodBinder	13
SS WoodBinder.	13
ST-XL MB WoodBinder.	14
Eclipse MB WoodBinder	14
ZXL MB WoodBinder.	15
#14 Type 17 WoodBinder.	15
Tapping WoodBinder.	16
ZXL Tapping WoodBinder.	16

Accessories

Clip Screw.	17
Metal to Wood ST Clip Screw.	17
Metal to Metal ST Clip Screw.	17
Deck and Installation.	18
ST Reamer Screws.	18
InsulDrill.	18
Rivet and Grommet.	19
ST Rivet.	19
ST Grommet.	19
Anchors.	20
ST Wedge Anchor.	20
ST Nail Anchor.	20
Universal Flashings.	21
Roofjack RD.	21
Fix-A-Flash Roofjack SQ.	21
Roofjack SQ.	22
Retrofit Roofjack SQ.	23
Retrofit Roofjack RQ.	23
Extreme Roofjack.	24
Roofjack Expansion Joint.	24
Closures & Ventilation.	25
STClosureStrip.	25
MultiVent.	26
MultiVent 10/ MultiVent 20.	26

Accessories *Continued*

MultiVent Contour.	27
STPolyUrethaneStrip.	27
NovaFlex.	28
Emseal AST Acrylic Sealant Tape.	28
TackyTape.	29
Snow & Retention Tools.	30
ST Driver.	30
ST Socket.	30
Snow Trax.	31
MRC Snow Trax.	31

Terms & Conditions

AVAILABILITY: Fasteners shown in this product catalog are standard in our product line. Many related nonstandard items not shown here are available and will be priced upon request.

PRICES: Prices and conditions of sale are subject to change without notice.

STANDARD TERMS OF PAYMENT: Net 30 Days (Based Upon Credit Approval)

FREIGHT TERMS: F.O.B. shipping point.

1. Freight is prepaid on orders of \$3000.00 or more of threaded fasteners. Also included in this group are Roofjacks, Rivets, Butyl Tape, Grommets, Structural Hardware.
2. Freight is prepaid on orders of \$3000.00 or more that are predominantly Closure Strips and Closure related items.

STANDARD PACKAGING: All STEELBINDER & KWIKSEAL WOODBINDER screws are packaged in 250 piece polyethylene bags.

1. Specialty fasteners are packaged in bulk boxes.
2. Orders for less than box quantity will be subject to a 10% surcharge.
3. Orders for less than a 250 piece bag quantity will be subject to a 25% surcharge.

DROP SHIPMENTS: All drop shipments are prepaid and added to the invoice.

WARRANTY AND LIMITATIONS OF LIABILITY: All warranties of ST Fastening Systems, expressed or implied, including the warranties of merchantability and fitness for particular purposes are specifically excluded except for the following. ST Fastening Systems will replace any product which, within 120 days after sale by ST Fastening Systems, is found by ST Fastening Systems to be defective in material or workmanship. This is the sole warranty of ST Fastening Systems and the sole remedy available to buyers.

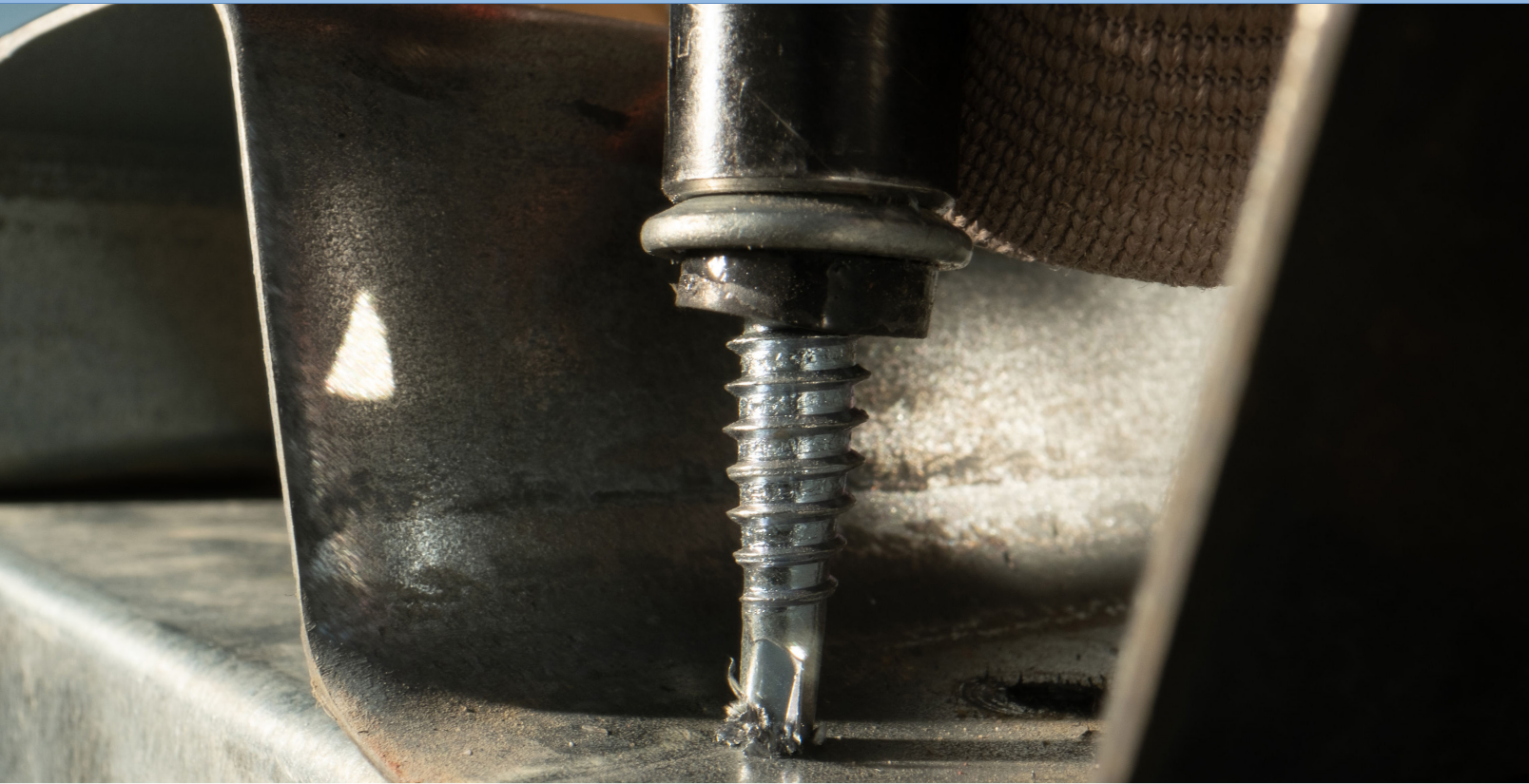
\$50.00 MINIMUM ORDER

RETURN GOODS POLICY: A Return Authorization number (RA) must be issued by ST Fastening Systems before any product will be accepted for return. Returns without this number will be refused by ST Fastening Systems receiving department. Product must be current standard product and in a reusable condition. Returned goods will be subject to a 20% restocking charge and must be returned freight prepaid.

* Any Special product produced specifically for a customers requirement and is not listed in our product catalog will only be accepted for return if at ST Fastening Systems discretion a resale market exists.

* This catalog may contain errors and omissions relating to product description, technical specifications and availability. We reserve the right to correct errors or omissions without prior notice. We also reserve the right to cancel any offered product or service in the event of an error or omission in the description, unavailability or other reason.

Metal to Metal



SteelBinder®

Metal-to-metal roofing screws are specialized fasteners designed for securely attaching metal roofing panels to the underlying structure. These screws offer several advantages for roofing applications. They feature a self-drilling and self-tapping design, making installation faster and more efficient. Additionally, their corrosion-resistant properties and threaded design ensure a long-lasting, watertight seal, providing structural stability and protection against leaks in metal roofing systems.



COATING SYSTEMS



Fade-resistant Powderful™ coating outperforms wet paint and continues to match metal panels for decades, helping to retain a structure's value.



DURASEAL+ is a clear corrosion resistant coating for unpainted fasteners. It helps provide screws protection from the elements for decades.

FASTENER HEADS



Zinc-Aluminum alloy is impervious to red rust. The warranty on the ZXL matches that of the metal panel, completing the roof "System."

FOUND ON:

• ZXL Steelbinder® • ZXL HG Steelbinder® • ZXL Tapping Steelbinder®



Maximum pull over strength and positive seal at any angle while protecting the EPDM washer from direct UV sun rays.

FOUND ON:

• MAXX™ Steelbinder®

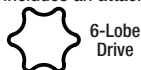


ECLIPSE

Truss head with 6-Lobe recessed driver. Provides a 50% lower-profile appearance. Includes an attached rubber washer for a secure seal.

FOUND ON:

• Eclipse Steelbinder®



6-Lobe Drive



HWH WITH WASHER

Hex washer head (HWH) with rubber washer attached to steel washer. Provides a secure seal, even when driven at an angle.

FOUND ON:

• HG Steelbinder®

FASTENER POINTS



Combination 2 and 3 point design—effortless, quick penetration into multilayers without point walking.

FOUND ON:

• MAXX™ Steelbinder® • ZXL Steelbinder®



SELF-DRILLING POINT

Sharp drill point & long flute length assures proper clearance of heavy gauge metal before any thread engagement begins.

FOUND ON:

• HG Steelbinder® • ZXL HG Steelbinder®
• Eclipse Steelbinder® • HWH Steelbinder®



TYPE AB POINT

The AB Point and thread type is designed to be used in pre-drilled holes. Perfect for retrofit applications in which existing screws have stripped/backed out & need to be replaced.

FOUND ON:

• Tapping Steelbinder® • ZXL Tapping Steelbinder®

Metal to Metal

MAXX™
SteelBinder®



POWDERFUL™
CORROSION DEFENSE
POWDER COAT SYSTEM

MAXX™
SELF-DRILL
SEALS ANY ANGLE
HWH CUPPED HEAD

2+3 HYBRID™
NO POINT WALKING
SELF DRILL POINT

- Fastener designed to attach metal roof and sidewall panels used in pre-engineered metal building applications.
- #12 Diameter 5/16" Cupped HWH self-drilling fastener easily penetrates steel up to .210" in thickness with no "point walking." 1/4" Stitch will securely fasten panel sidelaps up to 18 ga. panel thickness with no strip-out when installed correctly.
- Cupped head & washer encapsulate EPDM rubber washer & provide a secure seal even when driven at an angle.

SIZE	HEAD STYLE	CARTON QTY	WEIGHT/M
12-14 x 3/4"	5/16" CHWH**	2500	11.3
12-14 x 1"	5/16" CHWH**	2500	13.2
12-14 x 1-1/4"	5/16" CHWH**	2500	14.8
12-14 x 1-1/2"	5/16" CHWH**	2000	15.5
12-14 x 2"	5/16" CHWH**	1500	18.8
12-14 x 2-1/2"	5/16" CHWH**	1500	21.0
12-14 x 3"	5/16" CHWH**	1000	24.6
1/4-14 x 7/8" STITCH*	5/16" CHWH**	2500	13.4

*Current sizes available with powder coating

** CHWH-Cupped Hex Washer Head

HG
SteelBinder®



- Fastener lengths over 1-1/4" are designed to penetrate steel thickness up to .500".
- Thread to point ratio engineered to provide maximum pull out strength in heavy gauge steel.
- EPDM rubber is vulcanized to steel washer. Moisture has no place to penetrate. The washer provides a secure seal even when driven at an angle.
- Applications include metal deck to structural steel or bar joists, and retrofit clips to structural steel.
- Fastener is also available without a bonded sealing washer.

SIZE	HEAD STYLE	CARTON QTY	WEIGHT/M
12-24 x 1-1/4"	HWH	2500	12.6
12-24 x 1-1/2"	HWH	2000	16.2
12-24 x 2"	HWH	1500	22.1

Lengths longer than 2 inches are available but non-standard.

Call for price and availability.

ZXL SteelBinder®



**40
YEAR
WARRANTY**



ZXL™
NO RED RUST
ZAMAC 3 DIE CAST HEAD

2+3 HYBRID™
NO POINT WALKING
SELF DRILL POINT

POWERFUL™
CORROSION DEFENSE
POWDER COAT SYSTEM

- Fastener designed to attach long-life metal roof panels such as GALVALUME that are used in pre-engineered metal building applications.
- 5/16" Cupped HWH ZAMAC Zinc-Aluminum Alloy provides lifetime protection against red rust on the head. You may obtain a free copy of the written warranty upon request.
- Washer face design helps to capture rubber EPDM washer even when driven at an angle.
- #12 & 1/4" diameter drill point easily penetrates steel thickness up to .210" with no "point walking". 1/4" Diameter Stitch securely fasten panel sidelaps up to 18 ga. panel thickness with no strip-out.
- Head & washer face are designed to maximize pull over strength.

SIZE	HEAD STYLE	CARTON QTY	WEIGHT/M
12-14 x 1"	5/16" CHWH**	2000	16.9
12-14 x 1-1/4"	5/16" CHWH**	2000	18.8
12-14 x 1-1/2"	5/16" CHWH**	2000	22.0
12-14 x 2"	5/16" CHWH**	1500	23.1
12-14 x 3"	5/16" CHWH**	1000	31.0
1/4-14 x 1-1/4"	5/16" CHWH**	1500	24.1
1/4-14 x 7/8" STITCH*	5/16" CHWH**	2000	17.2

** CHWH-Cupped Hex Washer Head

ZXL HG SteelBinder®

**40
YEAR
WARRANTY**



ZXL™
NO RED RUST
ZAMAC 3 DIE CAST HEAD

- Fastener is designed to attach long-life metal roof panels such as GALVALUME to structural steel joists up to .500" thick.
- 5/16" Cupped HWH ZAMAC Zinc-Aluminum Alloy provides lifetime protection against red rust on the head & washer face. A written warranty is available upon request.
- The head & washer face captures the rubber EPDM washer even when driven at an angle & are designed to maximize Pull over strength.
- For structural steel applications, a screwgun with RPM under 2000 is recommended for best performance.

SIZE	HEAD STYLE	CARTON QTY	WEIGHT/M
12-24 x 1-1/4"	5/16" CHWH**	2000	25.8/M

** CHWH-Cupped Hex Washer Head

Metal to Metal

HWH
SteelBinder®



- Self-drilling screws that are designed for general construction applications.
- Drill points are designed to penetrate a wide variety of metal thicknesses.
- Applications include HVAC, roof deck to steel framing, and roof clips to steel framing.

SIZE	HEAD STYLE	CARTON QTY	WEIGHT/M
1/4-14 x 7/8" STITCH	5/16" HWH	2500	8.8
1/4-14 x 3/4"	3/8" HWH	2500	12.5
1/4-14 x 1"	3/8" HWH	2500	15.2
1/4-14 x 1-1/4"	3/8" HWH	2000	17.5
1/4-14 x 1-1/2"	3/8" HWH	1500	19.6
1/4-14 x 2"	3/8" HWH	1000	23.8
1/4-14 x 2-1/2"	3/8" HWH	1000	30.0
1/4-14 x 3"	3/8" HWH	1000	33.2
1/4-14 x 4"	3/8" HWH	500	41.9
1/4-14 x 5"	3/8" HWH	500	50.7
1/4-14 x 6"	3/8" HWH	250	53.0

SIZE	HEAD STYLE	CARTON QTY	WEIGHT/M
8-18 x 1/2"	1/4" HWH	10000	3.6
8-18 x 5/8" w/Nibbs	1/4" HWH	10000	4.0
10-16 x 5/8"	5/16" HWH	5000	5.7
10-16 x 3/4"	5/16" HWH	2500	6.3
10-16 x 1"	5/16" HWH	2500	7.6
12-14 x 3/4"	5/16" HWH	2500	8.4
12-14 x 1"	5/16" HWH	2500	10.0
12-14 x 1-1/4"	5/16" HWH	2500	11.8
12-14 x 1-1/2"	5/16" HWH	2000	13.3
12-14 x 2"	5/16" HWH	1500	16.7
12-14 x 2-1/2"	5/16" HWH	1500	21.4
12-14 x 3"	5/16" HWH	1000	25.0

ECLIPSE
SteelBinder®



- Truss Head with 6-lobe driver provides an aesthetic, low-profile appearance on sidewall metal applications installed into metal girts.
- Self-drilling point penetrates steel thickness up to .210".
- Undercut EPDM rubber washer provides a secure seal even when driven at an angle.
- T-30W driver is a designed to fit securely into the 6-lobe recess to prevent bit "cam-out."

SIZE	HEAD STYLE	CARTON QTY	WEIGHT/M
12-14" x 3/4"	TRUSS	2500	10.7
12-14" x 1-1/4"	TRUSS	2500	14.1
1/4"-14" x 7/8" STITCH*	TRUSS	2500	13.0

TAPPING SteelBinder®



- Tapping screws that are designed to be used in light gauge metal or light gauge metal in a pre-drilled hole. See Fastener Selection Guide on page 1 for proper drill bit sizes.
- Screws can be used as replacements for screws that have loosened from steel.
- 5/16" HWH with EPDM bonded sealing washer provides maximum pull over strength in high wind uplift applications.
- EPDM rubber & HH with EPDM bonded sealing is vulcanized to a steel washer to form an excellent seal & will cover any existing hole to prevent leaks from re-occurring.

SIZE	POINT STYLE	HEAD STYLE	CARTON QTY	WEIGHT/M
17 x 3/4"	TYPE AB	5/16" HWH	2000	14.0
17 x 1"	TYPE AB	5/16" HWH	2000	18.0
17 x 1-1/4"	TYPE AB	5/16" HWH	2000	22.0
17 x 1-1/2"	TYPE AB	5/16" HWH	1500	15.9

ZXL™ TAPPING SteelBinder®

**40
YEAR
WARRANTY**



ZXL™
NO RED RUST
ZAMAC 3 DIE CAST HEAD

- Type AB fasteners are designed to attach long-life roof panels such as GALVALUME that are used in pre-engineered metal building application. Type A fasteners are designed for use in wood framed buildings.
- Fasteners are also used in retrofit applications in which existing screws have stripped/backed out and need to be replaced with a larger diameter.
- 5/16" Cupped HWH ZAMAC Zinc-Aluminum Alloy provides lifetime protection against red rust on the head & washer face. A written warranty is available upon requested.
- The head & washer face captures the rubber EPDM washer even when driven at an angle & are designed to maximize Pull over strength.

SIZE	HEAD STYLE	CARTON QTY	WEIGHT/M
1/4-14 x 3/4" AB	5/16" HWH	2000	18.2
1/4-14 x 1" AB	5/16" HWH	2000	19.6
1/4-14 x 1-1/4" AB	5/16" HWH	2000	21.0
17-14 x 1" AB	5/16" HWH	1500	23.0

Wood to Metal



WoodBinder®

Metal-to-wood roofing screws are specialized fasteners engineered for securely attaching metal roofing panels to wooden substrates. These screws boast self-drilling capabilities, making installation efficient and cost-effective. Their corrosion-resistant coatings ensure durability in various weather conditions. With a threaded design, they provide reliable grip, enhancing structural integrity and safeguarding against water infiltration, essential for creating a durable and weather-resistant metal roofing system on wooden surfaces.



WoodBinder®

Innovation and Technologies

COATING SYSTEMS



Fade-resistant Powderful™ coating outperforms wet paint and continues to match metal panels for decades, helping to retain a structure's value.



DURASEAL+ is a clear corrosion resistant coating for unpainted fasteners. It helps provide screws protection from the elements for decades.

FASTENER HEADS



KS V-NECK™

PREVENTS TWIST OFF
HEX WASHER HEAD

KS V-NECK uses a unique "V" shape head to the fastener head to add strength to prevent head twist off under extreme torque.

FOUND ON:

- Kwikseal MB Woodbinder® • #12 Type 17 Woodbinder®



STAINLESS STEEL CAP HEAD

304 Stainless Steel cupped head & washer provide lifetime provides lifetime warranty against red rust even in the harshest environments.

FOUND ON:

- SS Woodbinder® • ST-XL MB Woodbinder®



ZXL™

NO RED RUST
ZAMAC DIE CAST HEAD

Zinc-Aluminum alloy is impervious to red rust. The warranty on the ZXL matches that of the metal panel, completing the roof "System."

FOUND ON:

- ZXL MB Woodbinder® • ZXL #12 T-17 Woodbinder®
- ZXL Tapping Woodbinder®



HWH WITH WASHER

Hex washer head (HWH) with rubber washer attached to steel washer. Provides a secure seal, even when driven at an angle.

FOUND ON:

- #14 Type 17 Woodbinder®
- Tapping Woodbinder®



ECLIPSE

Truss head with 6-Lobe recessed driver. Provides a 50% lower-profile appearance. Includes an attached rubber washer for a secure seal.

FOUND ON:

- Eclipse MB Woodbinder®



FASTENER THREADS AND POINTS



KS LO-ROOT™

PATENTED
XTREME HOLD™
THREAD DESIGN

Thread transitions from fine to coarse with superior holding strength and pullout prevention in wood.

FOUND ON:

- Kwikseal MB Woodbinder® • ZXL MB Woodbinder®



StripLoc™

THREAD 2 POINT
TECHNOLOGY

Grips the fiber of the OSB. The design greatly reduces the potential for fastener strip and pull out.

FOUND ON:

- #12 Type 17 Woodbinder® • ZXL #12 T-17 Woodbinder®



MB™

MICRO-BIT™
SELF DRILL POINT

Designed to penetrate steel quickly with no "point walking." Reduces metal shavings that can embed themselves in the rubber washer. Provides a superior drilling speed that reduces slow drilling for consistent drilling performance.

FOUND ON:

- Eclipse MB Woodbinder® • ST-XL MB Woodbinder® • ZXL MB Woodbinder® • Kwikseal MB Woodbinder®



TYPE 17 POINT

The Type 17 point will clean the existing hole of metal burrs & the oversized threads will generate increased holding strength.

FOUND ON:

- #14 Type 17 Woodbinder®



TYPE A POINT

The Type A point will tap a predrilled hole in steel but will self-drill through aluminum liner panels.

FOUND ON:

- SS Woodbinder® • Tapping Woodbinder®
- ZXL Tapping Woodbinder®

Wood to Metal

Kwikseal MB WoodBinder®



POWERFUL™
CORROSION DEFENSE
POWDER COAT SYSTEM

KS V-NECK™
PREVENTS TWIST OFF
HEX WASHER HEAD

MB®
MICRO-BIT™
SELF DRILL POINT

KS LO-ROOT™
PATENTED
XTREME HOLD
THREAD DESIGN

- Fastener designed to attach steel roofing & siding in post-frame & residential metal roofing applications.
- Threads transition from fine to coarse to generate superior holding strength in various wood substrates.
- Micro-Bit™ point reduces metal shavings that can embed themselves in the rubber washer.
- EPDM rubber is vulcanized to a steel washer to form an excellent seal even when driven at an angle.

SIZE	HEAD STYLE	CARTON QTY	WEIGHT/M
10 x 1"	1/4" HWH	3000	7.8
10 x 1-1/2"	1/4" HWH	2500	9.9
10 x 2"	1/4" HWH	2000	12.2
10 x 2-1/2"	1/4" HWH	1500	14.3
10 x 3"	1/4" HWH	1000	16.3
12 x 3/4" STITCH	1/4" HWH	2500	8.8

* ALL UNPAINTED WOODBINDER MB FASTENERS COME STANDARD WITH DURASEAL® PLUS ENHANCED CORROSION RESISTANCE COATING.

#12 TYPE 17 WoodBinder® The OSB Screw



POWERFUL™
CORROSION DEFENSE
POWDER COAT SYSTEM

KS V-NECK™
PREVENTS TWIST OFF
HEX WASHER HEAD

StripLoc®
THREAD 2 POINT
TECHNOLOGY

- OSB/Replacement Applications.
- Threads transition from fine to coarse to generate superior holding strength in various wood substrates.
- Micro-Bit™ point reduces metal shavings that can embed themselves in the rubber washer.
- EPDM rubber is vulcanized to a steel washer to form an excellent seal even when driven at an angle.

SIZE	HEAD STYLE	CARTON QTY	WEIGHT/M
#12 x 3/4"	HEX	2500	8.0
#12 x 1-1/2"	HEX	2500	10.0

ZXL #12 T-17 WoodBinder® The OSB Screw



**40
YEAR
WARRANTY**



POWDERFUL™
CORROSION DEFENSE
POWDER COAT SYSTEM

ZXL™
NO RED RUST
ZAMAC DIE CAST HEAD

Strip-Loc
THREAD 2 POINT
TECHNOLOGY

- OSB/Replacement Applications.
- Deep forceful threads that will grip into the soft fibers.
- Color matched Powderful™ coating.
- ZXL™ is an excellent choice for GALVALUME & other long-life metal roof panels.
- Strip-Loc Thread to Point technology

SIZE	HEAD STYLE	CARTON QTY	WEIGHT/M
#12 x 1-1/2"	HEX	2500	10.1

SS WoodBinder®

**40
YEAR
WARRANTY**



- 304 Stainless Steel cupped head & washer provide lifetime protection in the harshest environments. You may obtain a free copy of the written warranty upon request.
- 304 SS™ Woodbinder® is an excellent choice for use in animal confinement applications or for aluminum linear panel applications.
- Type A point necessitates a pre-drilled hole in steel, but not aluminum

SIZE	HEAD STYLE	CARTON QTY	WEIGHT/M
10 x 1"	1/4" CHWH	3000	9.0
10 x 1-1/2"	1/4" CHWH	2500	11.9
10 x 2"	1/4" CHWH	2000	14.0

Wood to Metal

ST-XL MB WoodBinder®

40
YEAR
WARRANTY



MB
MICRO-BIT
SELF DRILL POINT

- Designed as an alternative to the zinc-aluminum alloy head. It is also used to attach steel roofing used in post-frame & residential construction. The smaller cupped HWH provides an attractive low-profile appearance versus larger HWH fasteners
- 304 Stainless Steel cap provides lifetime warranty against red rust on the head & washer. You may obtain a free copy of the written warranty upon request.
- ST-XL™ is an excellent choice for GALVALUME or other long-life metal roofs.
- The combination of a Micro-Bit™ drills 29 & 26 gauge consistently & eliminates the metal shavings that can embed themselves in the EPDM rubber washer.

SIZE	HEAD STYLE	CARTON QTY	WEIGHT/M
10 x 1"	1/4" HWH	3000	7.8
10 x 1-1/2"	1/4" HWH	2500	9.9
10 x 2"	1/4" HWH	2000	12.2
10 x 2-1/2"	1/4" HWH	1500	14.3
10 x 3"	1/4" HWH	1000	16.3
12 x 3/4" STITCH	1/4" HWH	2500	8.8

**CHWH-Cupped Hex Washer Head.

ECLIPSE MB WoodBinder®



MB
MICRO-BIT
SELF DRILL POINT

- 304 Stainless Steel cupped head & washer provide lifetime protection in the harshest environments. You may obtain a free copy of the written warranty upon request.
- 304 SS™ Woodbinder® is an excellent choice for use in animal confinement applications or for aluminum linear panel applications.
- Type A point necessitates a pre-drilled hole in steel, but not aluminum.

SIZE	HEAD STYLE	CARTON QTY	WEIGHT/M
10 x 1"	TRUSS	3000	8.0
10 x 1-1/2"	TRUSS	2500	10.1
10 x 2"	TRUSS	2000	12.2
10 x 2-1/2"	TRUSS	1500	15.4
10 x 3"	TRUSS	1000	17.2

ZXL^{MB} WoodBinder[®]

40
YEAR
WARRANTY



POWERFUL™
CORROSION DEFENSE
POWDER COAT SYSTEM

ZXL™
NO RED RUST
ZAMAC DIE CAST HEAD

KS LO-ROOT™
PATENTED
XTREME HOLD
THREAD DESIGN

MB®
MICRO-BIT
SELF DRILL POINT

ST
ARCHITECTURAL
SERIES

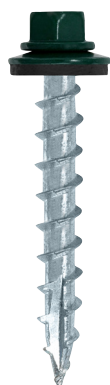
- Fastener designed to attach steel roofing & siding in post-frame & residential metal roofing applications.
- 5/16" cupped HWH with a molded ZAMAC Zinc-Aluminum alloy provides lifetime protection against red rust on the head & washer. (You may obtain a free copy of the written warranty upon request.)
- ZXL™ is an excellent choice for GALVALUME & other long-life metal roof panels.
- Threads transition from fine to coarse to generate superior holding strength in various wood substrates.
- Micro-Bit point reduces metal shavings that can embed themselves in the rubber washer.

SIZE	HEAD STYLE	CARTON QTY	WEIGHT/M
10 x 1"	5/16" CHWH**	3000	12.7
10 x 1-1/2"	5/16" CHWH**	2500	14.7
10 x 2"	5/16" CHWH**	2000	17.0
10 x 2-1/2"	5/16" CHWH**	1500	19.2
10 x 3"	5/16" CHWH**	1000	21.0
12 x 3/4" STITCH	5/16" CHWH**	2500	9.0

**CHWH-Cupped Hex Washer Head.

*** Tabulated value is the force at which the ZXL head breaks from carbon steel body

#14 TYPE 17 WoodBinder[®]



- Designed to be used as a "rescue screw". This fastener will replace nails or smaller diameter fasteners that have loosened & backed out of steel roofing over time.
- 5/16" HWH with bonded sealing washer will completely cover existing hole, even if elongated by movement in the metal roof.
- Type 17 point will help clean the existing hole so that oversized threads can tap & generate maximum holding strength.
- EPDM rubber is vulcanized to the steel washer to prevent delamination & form an excellent seal even when driven at an angle.

SIZE	HEAD STYLE	CARTON QTY	WEIGHT/M
14 x 1"	5/6" HWH	2000	13.0
14 x 1-1/4"	5/6" HWH	2000	15.7
14 x 1-1/2"	5/6" HWH	1500	17.7
14 x 2"	5/6" HWH	1500	22.3
14 x 2-1/2"	5/6" HWH	1000	26.7

Wood to Metal

TAPPING WoodBinder®



- Tapping screws that are designed to be used in wood or light gauge metal in a pre- drilled hole. See Fastener Selection Guide on page 1 for proper drill bit sizes.
- Screws can be used as replacements for nails or screws that have loosened from wood or steel.
- 3/8" HWH with EPDM bonded sealing washer provides maximum pull over strength in high wind uplift applications.
- EPDM rubber & HWH with EPDM bonded washer is vulcanized to a steel washer to form an excellent seal & will cover any existing hole to prevent leaks from re-occurring.

SIZE	POINT STYLE	HEAD STYLE	CARTON QTY	WEIGHT/M
14 x 3/4"	TYPE A	3/8" HWH	2500	16.5
14 x 1"	TYPE A	3/8" HWH	2000	16.9
14 x 1-1/4"	TYPE A	3/8" HWH	2000	17.6
14 x 1-1/2"	TYPE A	3/8" HWH	1500	24.6
14 x 2"	TYPE A	3/8" HWH	1500	26.0
14 x 2-1/2"	TYPE A	3/8" HWH	1000	30.8
14 x 3"	TYPE A	3/8" HWH	1000	35.9

ZXL TAPPING WoodBinder®



- Type AB fasteners are designed to attach long-life roof panels such as GALVALUME that are used in pre-engineered metal building application. Type A fasteners are designed for use in wood framed buildings.
- Fasteners are also used in retrofit applications in which existing screws have stripped/backed out & need to be replaced with a larger diameter.
- 5/16" Cupped HWH ZAMAC Zinc-Aluminum Alloy provides lifetime protection against red rust on the head & washer face. A written warranty is available upon request.
- The head and washer face captures the rubber EPDM washer even when driven at an angle and is designed to maximize pull over strength.

SIZE	HEAD STYLE	CARTON QTY	WEIGHT/M
14-10 x 1-1/2"	5/16" CHWH	1500	23.0



ST[®] Clip Screw Metal to Wood



- #10 Diameter is designed to attach standing seam roof clips to plywood, OSB, or wood purlins.
- Low profile head design provides excellent pull over strength.
- Thin Wafer Head is designed for standing seam panels that utilize no clip but require a very thin head so as not to dimple the roof panel.
- Available in Ruspert[®] corrosion resistant coated carbon steel or 304 stainless steel.

SIZE	HEAD STYLE	CRT QTY	WEIGHT/M
10 x 1" Pancake Type 17	#2 SQUARE/PHILLIPS COMBO	3000	7.0
10 x 1-1/2" Pancake Type 17	#2 SQUARE/PHILLIPS COMBO	2500	9.0
10 x 1" Pancake Type 17	#2 SQUARE DRIVE HEAD	3000	7.0
10 x 1-1/2" Pancake Type 17	#2 SQUARE DRIVE HEAD	2500	9.0
10 x 2" Pancake Type 17	#2 SQUARE DRIVE HEAD	2000	10.2
10 x 1" Wafer Sharp Point	#2 SQUARE/PHILLIPS COMBO	3000	5.0
10 x 1-1/2" Wafer Sharp Point	#2 SQUARE/PHILLIPS COMBO	2500	7.0
10 x 2" Wafer Sharp Point	#2 SQUARE/PHILLIPS COMBO	2000	9.0
10 x 1" 304 SS Sharp Point	#2 SQUARE/PHILLIPS COMBO	3000	7.0
10 x 1-1/2" 304 SS Sharp Point	#2 SQUARE/PHILLIPS COMBO	2500	9.0

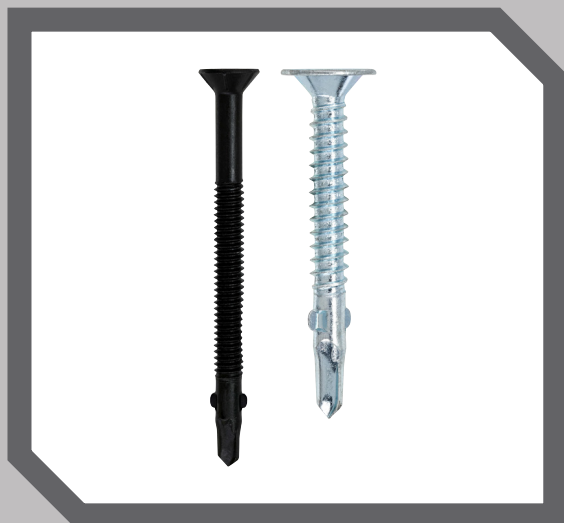
ST[®] Clip Screw Metal to Metal



- A self-drilling Pancake Head is available to attach standing seam roof clips to steel framing.
- Low profile head design provides excellent pull over strength
- Ruspert[®] corrosion resistant coating is standard on all Clip Screws.

SIZE	HEAD STYLE	CTN QTY	WEIGHT/M
10 x 1" SD Carbon STL.	#2 SQUARE/PHILLIPS COMBO	3000	7.0
10 x 1-1/2" SD Carbon STL.	#2 SQUARE/PHILLIPS COMBO	2500	9.0

ST Reamer Screws



- Family of screws designed to attach plywood & dimensional lumber to steel thickness up to .250".
- Small wings help bore a clearance hole to help prevent premature thread engagement in the wood. The wings break off after drilling is completed.
- Wafer head design is used for plywood applications. Flat head design is used for lumber applications.
- Applications include flooring in steel frame homes & truck body beds.

SIZE	HEAD STYLE	CARTON QTY	WEIGHT/M
10-16 x 1-5/8"	#2 SQUARE/PHILLIPS COMBO	3500	9.2/M
12-24 x 2"	#3 PFH	2000	17.5/M
12-24 x 2-1/2"	#3 PFH	2000	19.5/M
1/4-20 x 2-3/4"	#3 PFH	1500	28.6/M
1/4-20 x 3-1/4"	6 LOBE	1000	35.0/M

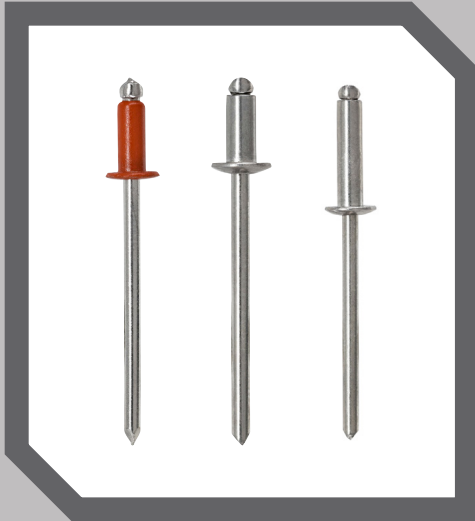
InsulDrill™



- #12 diameter screw has 1/4" HWH. Thread design has excellent holding strength in wood.
- #1 drill point will penetrate steel thickness up to 18 gauge.
- Black e-coat corrosion resistant coating is standard on all screws.
- G-90 bonded sealing washer is assembled to the fastener.
- Applications include retrofit & metal panels through rigid insulation to wood.
- Screws are available in all standard ST Fastening Systems colors (wet-paint process).

SIZE	HEAD STYLE	CARTON QTY	WEIGHT/M
12 x 3 3/4"	HWH	1000	26.5
12 x 4 1/2"	HWH	1000	30.7
12 x 5"	HWH	1000	33.4
12 x 6"	HWH	500	39.0
12 x 7"	HWH	500	43.7
12 x 8"	HWH	500	49.7

ST[®] Rivet



- Open-end blind rivet is designed to attach 2 thin pieces of metal for a low profile appearance.
- Applications include metal roofing ridge-caps, roof gutters & downspouts.
- 304 Stainless Steel, Carbon Steel, & Aluminum are available.
- Painted #43 Stainless are available to match most architectural panel colors.
- Color chart available upon request.

SIZE	CARTON QTY	WEIGHT/M
SSD43**	1000	3.0
SD42*	1000	2.9
SD44*	1000	3.3
AD42*	1000	1.1
AD44*	1000	1.3
AD46*	1000	1.4
AD66*	1000	3.4
SSD42*	1000	2.9

* Sizes listed are non-stock items & only available unpainted.

** In stock painted to match most architectural panel colors.

Call for price & availability.

ST[®] Grommet



- Grommet consists of 316 Stainless Steel machine screw, 304 Stainless Steel bonded washer, & internally threaded rubber sleeve with preassembled nut.
- As the fastener is tightened, the rubber sleeve expands to provide a gasketing effect on the bottom side of the pre-drilling hole.
- Applications include fastening fiberglass sheets together or other dissimilar materials that are prone to extensive expansion & contraction due to temperature changes.
- 316 Series Stainless Steel bonded washer is available as an option.

MATERIAL & GROMMET DIAMETER	FASTENER HEAD AND LENGTH	BOX QTY	WEIGHT LBS. PER 1000 PCS.
316 Stainless (3/8")	5/16" HH x 1 1/4"	2500	17.5

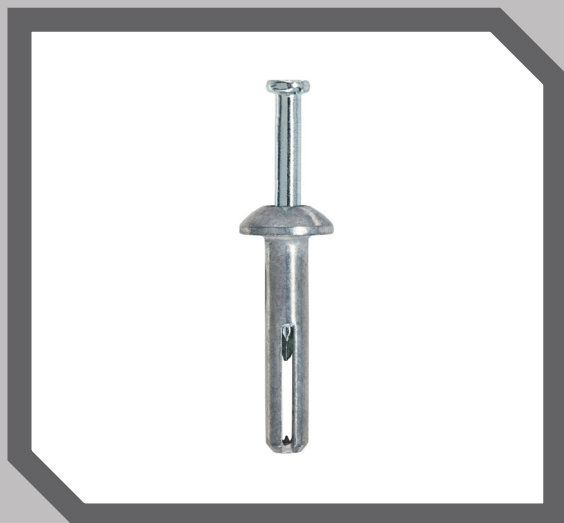
ST WedgeAnchor



- Wedge anchor is carbon steel with zinc plating.
- Applications include attaching base angle to concrete as well as other equipment subject to vibration or extreme movement.
- The hole diameter drilled with a carbide masonry bit is equal to the diameter of the anchor installed
- Expansion cone provides full 360 degree contact with the concrete, allowing maximum pull out strength.

SIZE	CASE QTY	CARTON QTY	WEIGHT/ CARTON
3/8 x 3"	50	200	10.8
3/8 x 3-3/4"	50	200	12.5
1/2 x 2-3/4"	25	100	19.0
1/2 x 3-3/4"	25	100	24.4
1/2 x 4-1/4"	25	100	26.0
5/8 x 4-1/2"	10	40	22.5
5/8 x 6"	10	40	59.0
3/4 x 5-1/2"	10	40	81.0
3/4 x 7"	10	40	99.0
3/4 x 10"	10	20	140.0

ST NailAnchor



- Anchor is designed for light duty & tamper proof applications in masonry materials---brick, block, or stone.
- Body is manufactured in a high strength zinc aluminum---ZAMAC 3---alloy.
- Drive Nail is either carbon steel or 304 stainless steel.
- Applications include Roof Flashings, Electrical Fixtures, & Brick Ties & Furring Strips.

ANCHOR SIZE (IN.)	INDUSTRIAL PACK QUANTITY BOX CARTON
1/4 x 1"	100/1000
1/4 x 1-1/4"	100/1000
1/4 x 1-1/2"	100/800
1/4 x 2"	100/800

RoofjackRD™



**20
YEAR
WARRANTY**



- Manufactured from EPDM or silicone rubber, ROOFJACK RD™ is compounded for maximum resistance to ozone, UV light, & temperature extremes.
- Flexible aluminum base will allow the flashing to conform to any metal roof configuration. Pipe location can be centered in the flat of the panel or the rib. Urethane sealant & self-drilling screws complete the installation.
- RoofjackRD are well marked so they can easily be cut with shears to fit exactly the pipe size used.
- RoofjackRD are available in Black or Gray EPDM as well as Red or Gray high temperature Silicone.

	PIPE SIZE	BASE DIAMETER	COLOR MATERIAL	CARTON QTY	WEIGHT/CARTON
#1	1/4" - 2-1/2"	4.75" (120.7mm)	Black/Gray EPDM & Red/Gray Silicone	15	2.5
#2	1-3/4" - 3"	6.21" (157.7mm)	Black/Gray EPDM & Red/Gray Silicone	15	4.5
#3	1/4" - 5"	7.74" (196.6mm)	Black/Gray EPDM & Red/Gray Silicone	15	7.5
#4	3" - 6-1/4"	9.26" (235.2mm)	Black/Gray EPDM & Red/Gray Silicone	10	8.0
#5	4-1/4" - 7-3/4"	10.75" (273.0mm)	Black/Gray EPDM & Red/Gray Silicone	10	9.5
#6	5" - 9"	12.50" (317.5mm)	Black/Gray EPDM & Red/Gray Silicone	10	12.0
#7	6" - 11"	14.60" (370.8mm)	Black/Gray EPDM & Red/Gray Silicone	10	15.5
#8	7" - 13"	16.5" (419.1mm)	Black/Gray EPDM & Red/Gray Silicone	5	12.8
#9	9" - 19"	25.25" (641.1mm)	Black/Gray EPDM & Red/Gray Silicone	5	19.3

FIX-A-FLASH™ RoofjackSQ™



- Designed for an over-sized hole, but smaller diameter pipe, over which a standard roofjack will not fit.
- Manufactured from EPDM or silicone rubber, the FIX-A-FLASH material compound is designed for maximum resistance to ozone, UV light, & temperature extremes.
- Each FIX-A-FLASH is well marked with pipe sizes, so it can be easily cut to properly conform to the pipe size used.
- FIX-A-FLASH have a flexible aluminum band that will conform to any metal roof configuration.

PIPE SIZE	BASE DIAMETER	COLOR MATERIAL	CARTON QTY	WEIGHT/CARTON
Closed Top 0" - 15" (0 - 381 mm)	19-1/2" (495 mm Base)	Black/Gray EPDM & Red Silicone	5	15
Open Top 6-3/4" - 15" (171 - 381 mm)	19-1/2" (495 mm Base)	Black/Gray EPDM & Red Silicone	5	15

Universal Flashings

RoofjackSQ™



**20
YEAR**

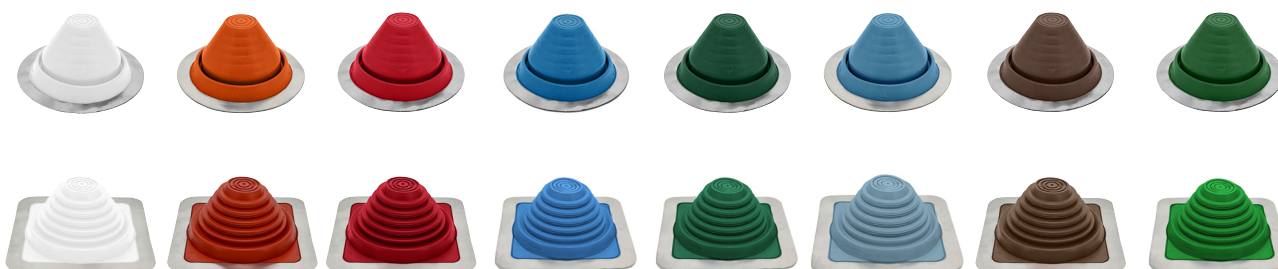
WARRANTY



- Manufactured from EPDM or silicone rubber, RoofjackSQ™ is compounded for maximum resistance to ozone, UV light, & temperature extremes.
- Flexible aluminum base will allow the flashing to conform to any metal roof configuration. Pipe location can be centered in the flat of the panel or the rib. Urethane sealant & self-drilling screws complete the installation.
- RoofjackSQ are well marked so they can easily be cut with shears to fit exactly the pipe size used.
- RoofjackSQ are available in Black or Gray EPDM & Red Silicone.
- RoofjackSQ can be turned so corner is pointing up the roof. It will act as a water diverter.

	PIPE SIZE	BASE DIAMETER	COLOR MATERIAL	CARTON QTY	WEIGHT/CARTON
MINI	1/8" - 3/4"	2 - 1/4" (57mm)	Black/Gray EPDM & Red Silicone	15	2.5
#1	1/4" - 2-3/4"	4-1/2" (114mm)	Black/Gray EPDM & Red Silicone	15	2.5
#2	7/8" - 4"	6" (152mm)	Black/Gray EPDM & Red Silicone	15	4.5
#3	1/4" - 5-3/4"	8" (203mm)	Black/Gray EPDM & Red Silicone	15	7.5
#4	2-3/4" - 7"	10" (254mm)	Black/Gray EPDM & Red Silicone	10	8.0
#5	4" - 8-1/4"	11" (279mm)	Black/Gray EPDM & Red Silicone	10	9.5
#6	4-3/4" - 10"	12" (304mm)	Black/Gray EPDM & Red Silicone	10	12.0
#7	5-1/2" - 11-1/2"	14" (355mm)	Black/Gray EPDM & Red Silicone	10	15.5
#8	6-3/4" - 13-1/2"	17" (431mm)	Black/Gray EPDM & Red Silicone	5	12.8
#9	9-1/2" - 20-1/2"	25" (635mm)	Black/Gray EPDM & Red Silicone	5	19.3
MAXI	12" - 28-1/2"	34" (863mm)	Black/Gray EPDM & Red Silicone	5	25.6

ARCHITECTURAL ROOFJACK AVAILABLE IN 8 COLORS



RETROFIT RoofjackSQ™



**20
YEAR
WARRANTY**



- Manufactured from EPDM or silicone rubber, Roofjack™ is compounded for maximum resistance to ozone, UV light, & temperature extremes.
- Flexible aluminum base will allow the flashing to conform to any metal roof configuration. Pipe location can be centered in the flat of the panel or the rib. Urethane sealant & self-drilling screws complete the installation.
- RETROFIT Roofjack are well marked so they can easily be cut with shears to fit exactly the pipe size used.
- Retrofit Roofjack are used in applications for which a standard flashing will not work. It wraps around the pipe instead of pulling down over the pipe. Hardware is included to ensure a watertight connection.
- Fastener snaps & cable tie are included.

	PIPE SIZE	BASE DIAMETER	COLOR MATERIAL	CARTON QTY	WEIGHT/CARTON
#1	1/2" - 4" (12.7 - 101.6 mm)	8" - 3/16" (80.96mm)	Black EPDM/Gray EPDM/Red Silicone	5	2.5
#2	4" - 9-1/4" (101.6 - 135 mm)	14-1/4" (361.95mm)	Black EPDM/Gray EPDM/Red Silicone	5	8.0
#3	9-1/4" - 16-1/4" (95 - 254 mm)	21-1/2" (546.1mm)	Black EPDM/Gray EPDM/Red Silicone	5	15.5

RETROFIT RoofjackRD™



- Manufactured from EPDM or silicone rubber, Roofjack™ is compounded for maximum resistance to ozone, UV light, & temperature extremes.
- Flexible aluminum base will allow the flashing to conform to any metal roof configuration. Pipe location can be centered in the flat of the panel or the rib. Urethane sealant & self-drilling screws complete the installation.
- RETROFIT Roofjack are well marked so they can easily be cut with shears to fit exactly the pipe size used.
- Stainless steel teeth grip the material & secure it tightly.

	PIPE SIZE	BASE DIAMETER	COLOR MATERIAL	CARTON QTY	WEIGHT PER CARTON
#1	3/4" - 2-3/4" (19 - 70 mm)	4-1/2" (114mm)	Black EPDM/Gray EPDM/Red Silicone	5	2.5
#2	2" - 7-1/4" (50.8 - 184)	6" (152mm)	Black EPDM/Gray EPDM/Red Silicone	5	8.0
#3	3-1/4" - 10" (95 - 254 mm)	8" (203mm)	Black EPDM/Gray EPDM/Red Silicone	5	15.5

Universal Flashings

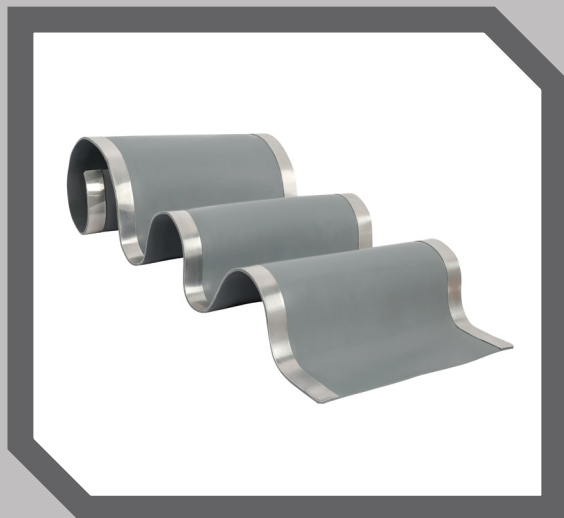
EXTREME™ Roofjack™



- Weather Resistance Designed to withstand the damaging effects of ultra violet light and ozone.
- Modification Made Simple Easy to see pipe diameters make for painless one-site customization.
- The built in 40° degree pitch allows to handle any extreme roof pitch (35° - 65°), sleeve flexibility accommodates vibration and pipe movement caused by expansion/contraction. Easy on-site customization accommodates all normal installations.
- Adaptable Base. The base is designed to mold to most panel configurations and roof pitches regardless of pipe location.

PIPE SIZE	BASE DIAMETER	COLOR MATERIAL	CARTON QTY	WEIGHT/ CARTON
1/4" - 5-3/4" (6 - 146 mm)	11" (279 mm)	Black EPDM/Gray EPDM/Red Silicone	5	2.5

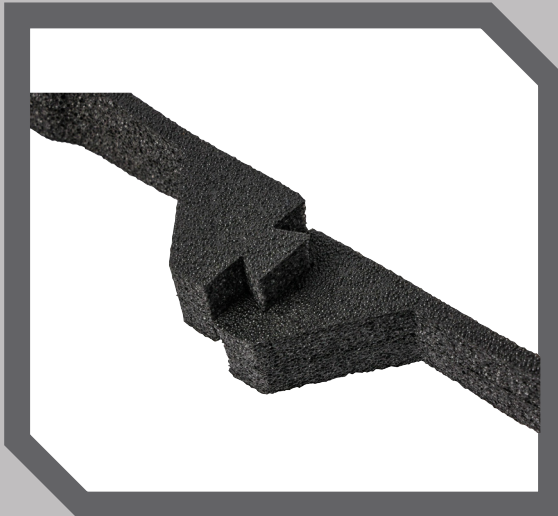
EXPANSION JOINT™ Roofjack™








- LINEAR EXPANSION JOINT is manufactured from EPDM rubber to resist UV light, ozone, & temperature extremes.
- There are flexible aluminum bands integrated into each width of the material that conform to any metal roof panel configuration.
- Applications include transition walls, parapet walls, stepped roofs, square vents.

WIDTH	LENGTH	COLOR MATERIAL	WEIGHT PER CARTON
9" (288 mm)	3ft (914 mm)	Gray EPDM	1.8 LBS.
9" (288 mm)	12ft (3.65 meters)	Gray EPDM	5.18 LBS.
9" (288 mm)	33ft (10 meters)	Gray EPDM	13.37 LBS.
12" (305 mm)	3ft (914 mm)	Gray EPDM	2.28 LBS.
12" (305 mm)	12ft (3.65 meters)	Gray EPDM	6.10 LBS.
12" (305 mm)	33ft (10 meters)	Gray EPDM	15.02 LBS.

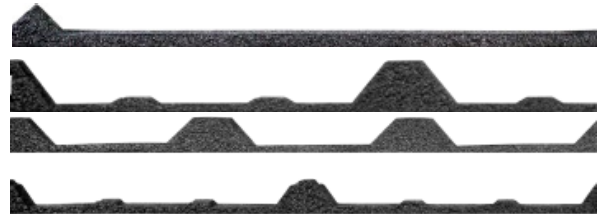
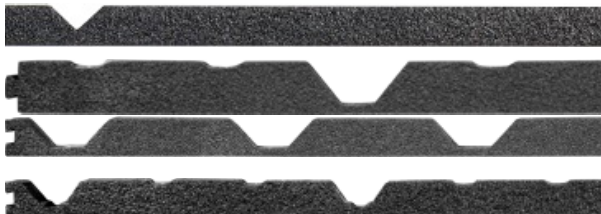
ST® ClosureStrip



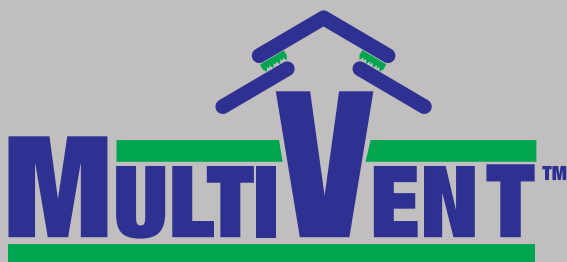
- Designed to close gaps in roof & sidewall applications. Material is pre-cut to conform to metal panel configurations.
- Applications include closing the openings at the ridge (peak of the building) or at the eave (gutter-line of a building).
- 1.8 lb. Density polyethylene foam is designed to withstand harsh weather elements including moisture & ultraviolet rays.
- Optional pre-applied adhesive helps to keep closure in place before roof panel is fastened.
- Interlocking dovetails provide a secure end-to-end fit, eliminating any potential gaps.
- Other profiles are available. Call ST Fastening Systems Customer Service for availability.

PANEL PROFILE	DESCRIPTION	PITCH OF CORP	WIDTH OF STRIP	HEIGHT OF CORP	LENGTH OF STRIP	PIECES/ CARTON	WEIGHT/ CARTON
	3/4" Ag Rib	9"	7/8	3/4"	36"	100	6 LBS.
	R-Panel	12"	7/8	1-1/4"	36"	100	6 LBS.
	U-Panel	6"	7/8	3/4"	36"	100	6 LBS.
	Pro Panel II	9"	7/8	5/8"	36"	100	6 LBS.
	2.67" x 7/8" Corrugated	2.67"	7/8	7/8"	36"	100	6 LBS.

ADDITIONAL INSIDE AND OUTSIDE PROFILES ARE AVAILABLE



Closures and Ventilation



- Adhesive is applied to the flat of the foam strip for easy field installation.
- Open cell foam formulated to allow as much as 98% free air flow.
- Material design prevents wind-driven rain from penetrating the material causing undesired leaks.
- Material design is universal in nature. It will conform to any panel 1 1/4" or less in height.
- MultiVent™ can be used on angled roof applications. There is no need for special angle cut closures.

LENGTH/ PIECE	PIECES/ CARTON	FEET/ CARTON	DIMENSIONS (W X H)
36"	60	180'	2" x 1.75"



- Specially formulated coated polyester has been manufactured from recycled material and is recyclable.
- Won't absorb moisture, which can freeze and block all ventilation.
- Unique doubled beaded adhesive for a durable holding strength.
- Available in 10' and 20' rolls.

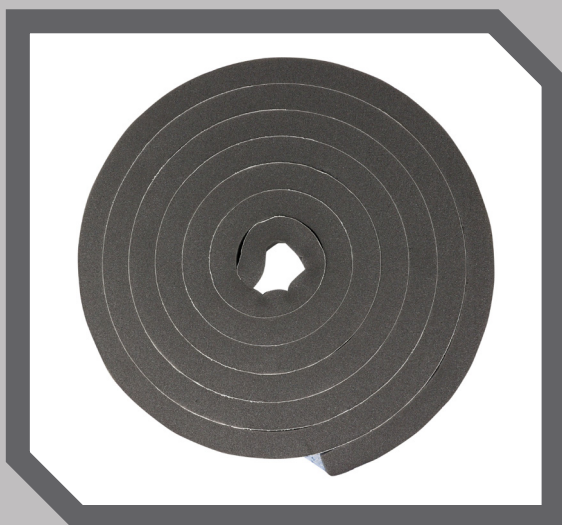
	LENGTH PER PIECE	PIECES PER PACKAGE	FEET PER PACKAGE	DIMENSIONS (W X H)
MultiVent 10 R	10'	2	20	2" x 1-1/2"
MultiVent 10 G	10'	2	20	2" x 1"
MultiVent 20 R	20'	1	20	2" x 1"
MultiVent 20 G	20'	1	20	2" x 1"



- 1 1/2" wide material is manufactured from the same high quality material as MULTIVENT™.
- Material can be cut in a particular profile to match metal panel profile.
- Vented material will provide maximum air flow, yet prevent wind driven rain when compressed.
- Adhesive is applied as standard to allow for easy field installation.

	PIECES/ CARTON	FEET/ CARTON	DIMENSIONS (W X H)
R-Panel1	40	120	1-1/2" x 1-1/4"
AG RIB	60	180	1-1/2" x 3/4"

ST PolyUrethane Strip



- Polyurethane foam strip is also referred to as Universal Closures.
- The material is a flexible semi-closed cell material that is used for filling voids & other openings between metal panels.
- They are available with or without pre-applied adhesive.
- Standard length is 25'.

THICKNESS	WIDTH	LENGTH	ROLLS/BUNDLE
1"	1"	25 FT.	10/BOX
1"	1-1/2"	25 FT.	10/BOX
1-1/2"	1-1/2"	25 FT.	10/BOX
2"	2"	25 FT.	10/BOX

* UNIVERSAL CLOSURES available in all sizes without adhesive. There are 20 rolls per package.

** Special Order non-taped.

Call for price & availability.

Sealants and Tape

NOVAFLEX SILICONE



- Permanently flexible, invisible to UV light, and mold/mildew resistant.
- Waterproof, weather tight seal that will not freeze, shrink, crack, sag, or slump. Plastic tubes will not fall apart, crack or split open.
- Excellent adhesion to most building substrates, excellent tooling, and easily gunned at all temperatures— winter and summer. Tack free in 10 minutes, and completely cured within 48 hours.
- 18 month shelf life, solvent free, low odor, and VOC compliant in all 50 states (green building compliance).
- Available in all major siding, trim, coil, window and metal roof manufacturer colors. AAMA verified for all window installations, and it can be used on interior and exterior surfaces/ applications.
- Ability to use entire tube—or can save with end cap—no waste, removable tips.

DESCRIPTION	CARTON QTY.	CARTON WEIGHT
MRS (Metal Roof Sealant) Silicone	12	10 LBS.

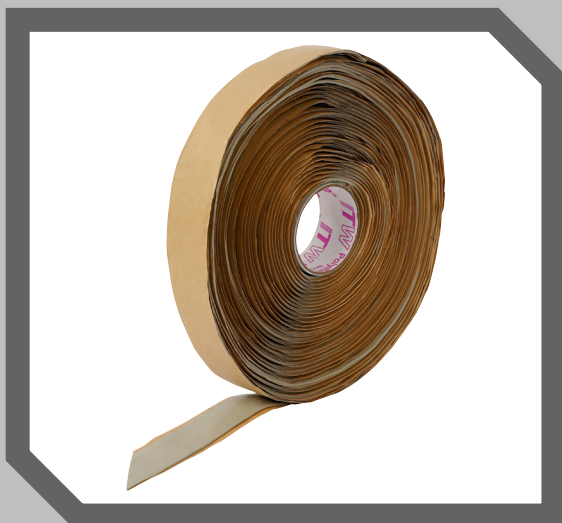
EMSEAL® AST ACRYLIC SEALANT TAPE



- AST is a self-adhering foam tape impregnated with water-based acrylic-modified asphalt emulsion.
- It is an excellent alternative to butyl tape & open-cell polyurethane foam strips.
- Will not dry out and become hard and brittle.
- UV-stable.
- Highly resistant to bugs and vermin.
- Will not extrude from between joints like caulk or butyl tapes.
- Conforms to contours and fills gaps.
- Maintains a seal during thermal expansion and contraction of building panels.
- Excellent compressibility and recovery (minimal compression set).
- Good thermal and sound insulator.
- No shrinkage or blow-out due to closed-cell breakage
- Supplied with self-adhesive on one side. After removal of packaging, material begins gradual expansion - more slowly in cold weather than in hot.

SUPPLIED SIZE	EXPANDED SIZE	LF/BOX	REELS PER BOX	REEL LENGTH
1/4" x 1"	1" x 1"	511.68 LF	26	19.7'
3/8" x 1"	1-1/2" x 1"	314.88 LF	24	13.1'

TackyTape®



- TACKY TAPE is a 100% solids, asbestos free butyl tape sealant in roll form.
- Applications include metal roof end laps, side laps, vents, gutters, pipe flashing, skylights.
- Service temperature range is -40 Degrees F- +180 Degrees F.
- Material will not become brittle or crack.

TACKY TAPE ROLL	CARTON QTY.
3/32" x 3/8" x 45'	40
3/32" x 1/2" x 45'	32
3/32" x 3/4" x 45'	24
3/32" x 1" x 45'	20

ST[®] Driver



- Maximum torque transfer & positive tool engagement means easier drive installation with less pressure & slippage.
- Drivers are specifically designed to fit ECLIPSE[®] WOODBINDER[®] & STEELBINDER[®] screws.

SIZE	TYPE	LENGTH
T25W275	6 LOBE	2-3/4"
T30W275	6 LOBE	2-3/4"
275-SQP2	SQUARE/PHILLIPS Combo	2-3/4"



6-Lobe
Drive



Phillips/Square
Combination Drive

ST[®] Socket



ST Magnetic Socket is available for powder coated fasteners

- 1/4", 5/16", 3/8" sizes are standard.
- Magnetic or Spring Retainer are both available.
- Magnetic socket is designed with a high power magnet for secure fit. Painted fasteners do not scratch or mar as easily.
- Spring retainer socket is designed for use with all ST Fastening Systems non-magnetic screws, especially the ZXL long-life family. The clip & ball bearing hold the screw securely in place during installation.

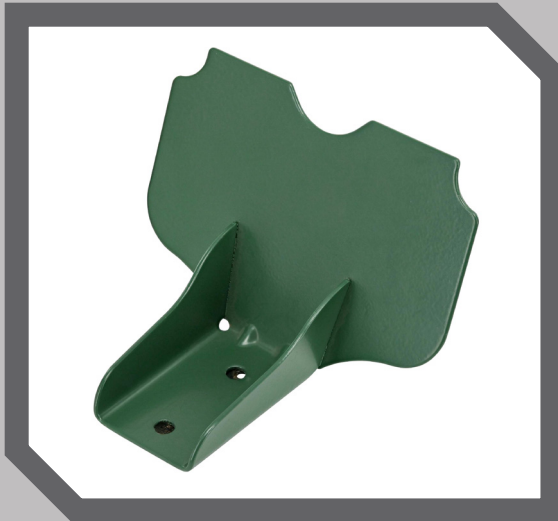
SIZE	TYPE	LENGTH
1/4"	Magnetic, Spring Retainer	2-9/16", 1-3/4"
5/16"	Magnetic, Spring Retainer	2-9/16", 1-3/4"
3/8"	Magnetic, Spring Retainer	2-9/16", 1-3/4"



Hex
Drive

NOTES: A 1 3/4" short magnetic socket is also available.

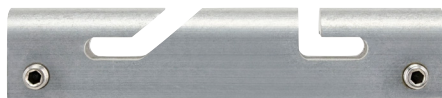
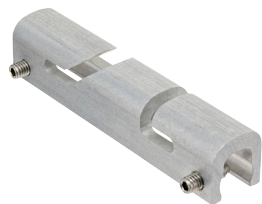
SnowTrax™



- Material is 16 gauge 304 Stainless Steel
- Snowtrax™ are packaged 50 pieces per box.
- No additional sealant is required, which saves cost & maintains a finished appearance.
- Snowtrax can be added to fastener orders to save freight costs.
- Powder coat paint is standard on all Snowtrax in 28 colors as well as unpainted.
- Snow Trax design is best suited for exposed fastener metal to wood roof applications.
- EPDM rubber gasket provides maximum sealing capability when installed with Kwikseal MB Wood-binder® screws.
- Powder coat colors will be consistent from job to job with no color drift.

MRC SnowTrax™

**25
YEAR
WARRANTY**



- Designed for residential standing seam metal roofs
- Made in USA
- Colored rail bent out of customer inventory.
- Freight savings.
- Efficiency inventory management.
- Product testing independently verified.
- 25 year warranty.

304 Stainless Steel coned set screws are provided to secure the clamp to the standing seam roof panel.



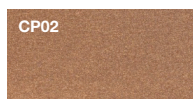
POWDERFUL™

PRODUCT COLOR CHART

STRivet

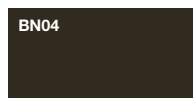
SnowTrax™

Fastener Systems



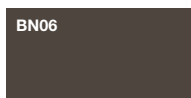
CP02

COPPER



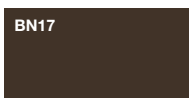
BN04

PATRICIAN BRONZE



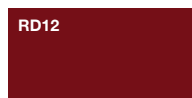
BN06

MEDIUM BRONZE



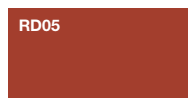
BN17

MANSARD BROWN



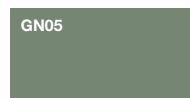
RD12

COLONIAL RED



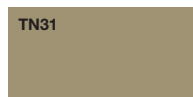
RD05

TERRA COTTA



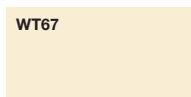
GN05

COLONY GREEN



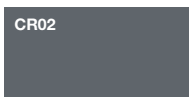
TN31

SIERRA TAN



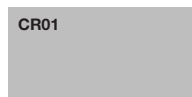
WT67

ALMOND



CR02

WEATHERED ZINC



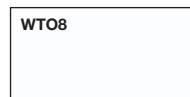
CR01

SILVER



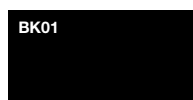
GY62

REGAL GRAY



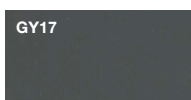
WT08

BONE WHITE



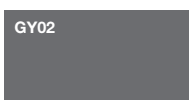
BK01

BLACK



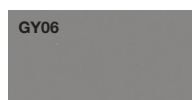
GY17

CHARCOAL



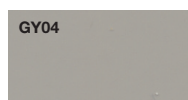
GY02

CHARCOAL GRAY



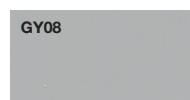
GY06

PEWTER GRAY



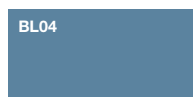
GY04

ASH GRAY



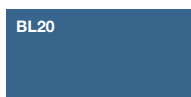
GY08

GRAY



BL04

HAWAIIAN BLUE



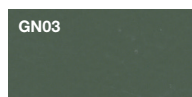
BL20

GALLERY BLUE



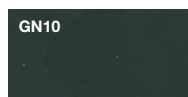
BL53

OCEAN BLUE



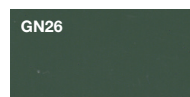
GN03

EVERGREEN



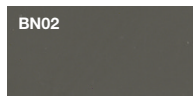
GN10

FERN GREEN



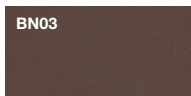
GN26

FOREST GREEN



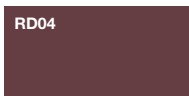
BN02

BURNISHED SLATE



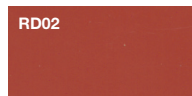
BN03

KOKO BROWN



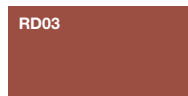
RD04

BURGUNDY



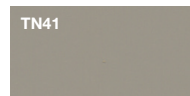
RD02

CRIMSON



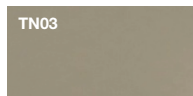
RD03

RUSTIC RED



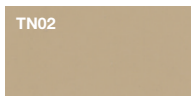
TN41

CLAY



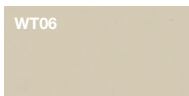
TN03

DESERT SAND



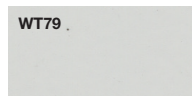
TN02

TAN



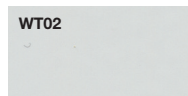
WT06

LIGHT STONE



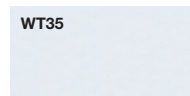
WT79

ALAMO WHITE



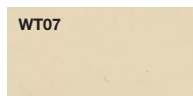
WT02

POLAR WHITE



WT35

BRIGHT WHITE



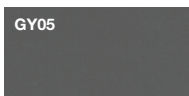
WT07

IVORY



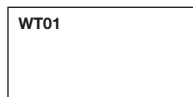
GY11

LIGHT GRAY



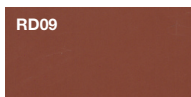
GY05

QUAKER GRAY



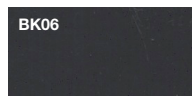
WT01

WHITE



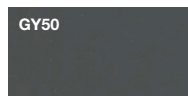
RD09

RED



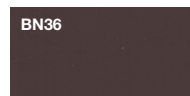
BK06

MATTE BLACK



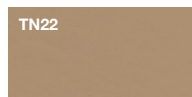
GY50

SLATE



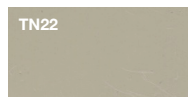
BN36

BROWN



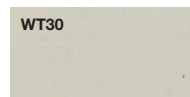
TN22

MOCHA TAN



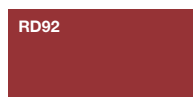
TN22

STONE



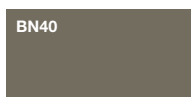
WT30

SANDSTONE



RD92

BROWN RED



BN40

BEIGE GREY

SnowTrax™
EXCLUSIVE COLORS

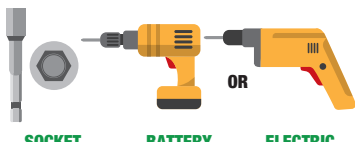
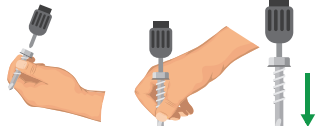

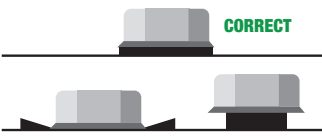
Fastener Systems
EXCLUSIVE COLORS

*Please note that this is a printed representation of powder coat paint colors. Because of printer calibrations, lighting, inks and paper variations there could be small variations in color between this sample and your actual product.

PROPER TECHNIQUE IS KEY




Whether using a pierce-point or self-drilling fastener, proper techniques must be followed for efficient installation and optimum fastener function. Punching or stabbing fasteners through a metal panel is not proper technique! Nails are meant to be driven. Fasteners are designed to be set without impact.

Deviation from proper technique will adversely affect the fastener's corrosion resistance, its ability to seal, and structural engineering values such as shear strength, pull-out and pull-over. Improper installation technique negates any applicable warranties.

STEP 1	USE CORRECT TOOLS  SOCKET BATTERY ELECTRIC	<ul style="list-style-type: none"> The proper tool for installing self-piercing or self-drilling metal-to-wood fasteners is a corded electric screw gun or cordless battery drill, each 0-2,000 RPM. They should be fitted with a depth sensing nose cone or a torque release clutch. A hex magnetic socket driver should be used that is clean of all metal shavings. A spring retainer socket may be used for non-magnetic fasteners. The use of an impact drill drive is strongly discouraged. The use of these drivers will damage the protective barrier coat paint system. They will invalidate published structural values due to the excessive torque applied. They can adversely affect the sealing performance of the washer and damage the metal panel.
STEP 2	SET PLACE DRILL 	<ul style="list-style-type: none"> Proper installation technique is important to maximize the micro-bit performance. Place the point of the fastener on the work surface and pull the trigger on the drill or screw gun. By slowly increasing the RPM, the drill point will begin the cutting process. This will eliminate any potential for screws "walking" on a panel and provide 100% installation success.
STEP 3	LET THE DRILL DO THE WORK  DON'T STAB ENGAGE METAL WITH MICRO-BIT	APPLY EVEN PRESSURE <ul style="list-style-type: none"> At no time should an installer try to use the fastener as a "punch" to start the drilling process. This will cause the fastener to "walk" on the metal, possibly scratching the metal panel or flipping out of the drill driver completely. The trigger should not be taped in the "on" position, as this may cause the fastener to rotate before it has been placed on the work surface. Let the drill point do the work. It will consistently cut the metal, ejecting small shavings, not long metal "pigtailes" as with sharp point screws.
STEP 4	SEAT WASHER PROPERLY  OVERDRIVEN CORRECT UNDERDRIVEN	VISUAL INSPECTION <ul style="list-style-type: none"> To prevent damage to the wood substrate, cause potential strip out of the fastener, the washer should be compressed, but not overdriven. It should be rounded evenly under the flange of the HWH. Driving the fastener perpendicular to the work surface will allow this to happen. If the washer is overly flat, misshapen, or cut, this indicates the fastener has been overdriven. If there is a gap between the washer and the flange of the HWH, this indicates an underdriven condition.

EVOLUTION OF FASTENERS FOR WOOD FRAME CONSTRUCTION

In the early 1900's, "pole barns" became popular in the United States. The name arose from the use of telephone poles as the primary structural member. They were less expensive than conventional construction methods at the time, and they could be erected quickly. Corrugated steel, developed in the 1800's, quickly became the cladding of choice for pole barns.

 NAILS <p>Initially, the panels were attached to the wood substructure with nails. These nails were fitted with a lead washer. The nails were driven into the apex of the high rib of the corrugation because the lead washer did not provide good sealing qualities. The nails, being hammered into the panels, were unsightly and difficult to install. Nails were eventually replaced by self-piercing fasteners.</p> <p>THE MB MICRO-BIT POINT MAY GENERATE SMALL METAL SHAVINGS UPON INSTALLATION. IT IS RECOMMENDED TO CLEAN/SWEET THE METAL PANELS AFTER INSTALLATION TO PREVENT PREMATURE RUST SPECKS.</p>	 SELF-PIERCING FASTENERS <ul style="list-style-type: none"> Self-piercing fasteners are designed with a sharp point. The screw rotation helps the sharp point pierce the metal, allowing the threads to engage the metal panel & the wood. A rubber & metal washer combination will create a tight seal around the hole created. This allows the fastener to be installed in the flat of the metal panel instead of the high rib, creating a stronger connection. Fasteners do not require an impact to the head to be installed, unlike nails. This protects the paint finishes & corrosion resistant coatings on the metal panels & fasteners. Fasteners are installed with an electric screw gun or battery drill. They can be painted to match any panel color creating a more aesthetic appearance. These panels have evolved with high quality paint systems & finished, & are not longer only used on pole barns. The primary complaint about self-piercing fasteners is the inconsistency of the drilling process. The points may not penetrate the steel panel quickly. This leads to a slow drill or no drill situation. The introduction of the WOODBINDER® Micro-Bit point resolves this issue. 	 SELF-DRILLING FASTENERS (NEW TECHNOLOGY) <ul style="list-style-type: none"> The Kwik-Seal® MB™ Woodbinder® combines metal to metal fastener point technology with ST Fastening Systems' unique deep crested thread design for maximum holding strength in all wood substrates. The Micro-Bit point acts as a drill bit, consistently drilling single or multiple thicknesses of high strength steel panels. It requires less end pressure to penetrate the metal & engage the wood. The Micro-Bit will eliminate the metal "pigtailes" commonly formed by self-piercing screws, which can embed themselves in the rubber washer, tearing the rubber. These can cause premature corrosion or a roof leak. The Micro-Bit creates small metal shavings that are ejected away from the fastener hole, which can easily be swept off the roof each day.
---	---	--

MAXX™ STEELBINDER® FASTENER FEATURES

HEAD

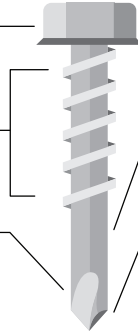
Proper head style choice will ensure stability during driving, proper clamping and desired finished appearance.

THREAD FORM AND DIAMETER

The correct choice of thread form and diameter optimizes low installation torque with high pull out strength.

FLUTE

Flute ejects material removed by the drill point & must clear all material before threads begin to engage.



PILOT SECTION

The unthreaded portion of the point assures that drilling of the steel is completed before the threads begin tapping into the drilled hole.

POINT

The point is designed to begin the cutting process & precisely size the hole to the proper diameter of the thread.

FINISH

Plating & coatings provide lubricity during drilling and tapping as well as corrosion resistance.

*Drill capabilities may vary with special flute length

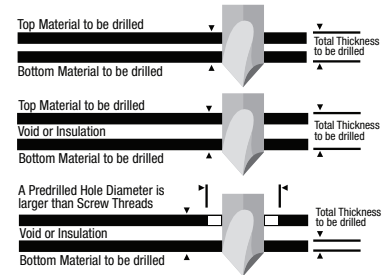
MAXX STEELBINDER® DRILLING TECHNIQUE

ST Fastening Systems Maxx Steelbinder... DRILLS, TAPS AND FASTENS IN ONE OPERATION.





A separate drilling operation is not necessary. However, specific installation procedures are necessary to ensure correct fastening results and to achieve published performance values for each fastener.

Important: A 1900 to 2500 RPM screwgun rated at 6 amps or higher, equipped with a properly adjusted depth-sensing nose piece, should be used to ensure proper fastening performance. During initial drilling, enough pressure must be applied while keeping the screwgun and fastener perpendicular to the work surface to prevent angle driving or walking. **The flute length must be long enough to ensure that drilling is completed before any threads engage the material. This includes all voids & insulation thickness.** It is essential to choose the correct fastener based upon the total thickness and type of material to be drilled and fastened for an application. Never overdrive the fasteners or install fasteners at an angle to the work surface as this may significantly reduce product performance or lead to failure.

Contact ST Fastening Systems Technical Services at 1-800-352-4864 for any specific information necessary.




FASTENER SELECTION GUIDE

TYPE	NOMINAL DIAMETER & ALLOY <small>All screws listed other than 304 Stainless Steel are carbon steel with zinc plating</small>	STEEL PANEL OR STRUCTURAL THICKNESS																								
		.010	.020	.030	.040	.050	.060	.070	.080	.090	.100	.110	.120	.130	.140	.150	.160	.170	.180	.190	.200	.210	.220	.230	.240	.250
 A	#10 (.190")	1	1/8"				9/64"																			
	#12 (.210")	1	9/64"				9/64"																			
	#14 (.250")	1	1/8"	3/16"				#8																		
	#14 (.250") 304 S.S.	2	3/16"				#8																			
 AB	#12 (.210")	1	1/8"				9/64"		11/64"																	
	1/4" (.240")	1	1/8"				#8		#7		#1															
	#17 (.285")		3/16" 5				1/4" 5				17/64" 5															
	1/4" 304 S.S.	2	1/8"	3/16"				#8		#7		#1														
	#17 304 S.S.	2	3/16" 5				1/4" 5				17/64" 5															
 B	#12 (.210")	1							11/64"		3/16"															
	1/4" (.240")	1							#8		#7		#1 3													
	1/4" 304 S.S.	2							#8		#7		#1 3													
 SD	Kwikseal® MB™ Woodbinder® (.190")	PREDRILL NOT REQUIRED																								
	#10 (.190") Self Drill	6					6																			
	#12 (.210") MAXX Steelbinder	6					6																			
	#12 (.210") #4 POINT	6					6 To .250"																			
	#12 (.210") #5 POINT						To .500"																			
	1/4" (.240") #5 POINT		PREDRILL NOT REQUIRED																							
	1/4" (.240") #3 POINT	6					6																			
GAGE REFERENCE		26 24 20 18 16 14 13 12 11 10 8 3/16" 6 7/32" 4 1/4"																								
<div><div><div>1 Drill bit sizes shown are for new construction applications.</div><div>2 300 Series Stainless Steel fasteners require a screw gun with 600-800 rpm maximum.</div><div>3 Use #1 bit to 3/8" thick. For heavier steel up to 1/2" thick, use .231 drill bit.</div><div>4 Drill size recommendations assumes 50-55000 psi yield steel. Higher tensile steel may require adjustments in drill size to permit proper installation.</div><div>5 #17 Type AB Self-Tapping screws are most often used as a repair screw for stripped 1/4" diameter fasteners in applications up to 11 ga. steel.</div><div>6 Material thickness ranges indicated for self-drill fasteners are for structural steel only. Proper consideration must be made for multiple thicknesses of structural steel as in nester purlins and girts.</div></div></div>																										

- 1 Drill bit sizes shown are for new construction applications.
- 2 300 Series Stainless Steel fasteners require a screw gun with 600-800 rpm maximum.
- 3 Use #1 bit to 3/8" thick. For heavier steel up to 1/2" thick, use .231 drill bit.
- 4 Drill size recommendations assumes 50-55000 psi yield steel. Higher tensile steel may require adjustments in drill size to permit proper installation.
- 5 #17 Type AB Self-Tapping screws are most often used as a repair screw for stripped 1/4" diameter fasteners in applications up to 11 ga. steel.
- 6 Material thickness ranges indicated for self-drill fasteners are for structural steel only. Proper consideration must be made for multiple thicknesses of structural steel as in nester purlins and girts.

1. Select the proper screw gun for installing self drilling fasteners.

No**



IMPACT DRIVER

RECOMMENDED SCREW GUNS* W/ DEPTH SENSING NOSE PIECE



BATTERY

OR



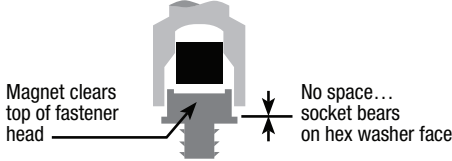
ELECTRIC

*For use in installing all self-drilling fasteners from #6 through # 1/4 diameters. Tool speed as high as 2500 RPM can be used for #6 through #10 diameters in softer materials. Do not use 4,000 RPM drywall guns.
****FOR PROPER APPLICATION, THE USE OF IMPACT DRIVES ARE NOT RECOMMENDED ON ANY POWDER COATED OR PAINTED FASTENER.**

	MAXX™ STEELBINDER®			HWH STEELBINDER® & KWIKSEAL® MB™ WOODBINDER®		
MANUFACTURER	MODEL	AMPERAGE	RPMS	MODEL	AMPERAGE	RPMS
MILWAUKEE	6790-20	6.5	0-2500	6790-20	6.5	0-2500
DEWALT	DW266	6.5	0-2500	DW266	6.5	0-2500
DEWALT	DCD780	N/A	0-2500	DCD780	N/A	0-2500
BOSCH	SG25MT	7.0	0-2500	SG25MT	7.0	0-2500

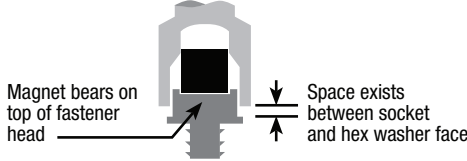
2. Set the magnet in the driving socket to the proper depth. Socket must bear securely on the hex washer face of the fastener.

CORRECT - Magnet set to correct depth









Magnet clears top of fastener head. No space... socket bears on hex washer face.

INCORRECT - Magnet set too shallow







Magnet bears on top of fastener head. Space exists between socket and hex washer face.

3. Use depth sensing nose piece on screw gun to allow proper seating of fastener. Do not overdrive. (See illustration)

	MAXX™ STEELBINDER®	HWH STEELBINDER® & KWIKSEAL® MB™ WOODBINDER®
CORRECT Sealing material slightly visible at edge of metal washer. Assembly is weather tight.		
UNDERDRIVEN Sealing material not compressed. Assembly loose.		
OVERDRIVEN Sealing material extruded beyond edge of washer. Washer deformed.		

4. Drive fastener perpendicular to surface.

MAXX™ STEELBINDER®		HWH STEELBINDER® & KWIKSEAL® MB™ WOODBINDER®	
CORRECT	INCORRECT	CORRECT	INCORRECT
			

5. Select extension cords with the correct wire size. See table below.

RECOMMENDED MINIMUM WIRE GAUGE* FOR EXTENSION CORDS

RATED AMPERES (TOOLS)	EXTENSION CORD LENGTH					
	25'	50'	75'	100'	150'	200'
THROUGH 5	16	16	16	16	12	12
5.1 - 8.0	16	16	16	16	10	—
8.1 - 12.0	14	14	14	10	—	—
12.1 - 15.0	12	12	10	10	—	—

*Tool manufacturer's recommended size head based upon limiting the line voltage drop to five volts at 150% of the rated amperes.

6. Do not force the fastener. Apply only enough end pressure to allow drill point to cut efficiently.

TYLER, TX

6357 Reynolds Road
Tyler, TX 75712

Phone: (800) 532-4864

Fax: (800) 352-3940

CINCINNATI, OH

3095 McBride Court, Unit A
Cincinnati, OH 45246

Phone: (800) 944-8920

Fax: (800) 564-8848



A Division of The Hillman Group

HILLMAN™

Corporate Office

Cincinnati, Ohio

All Points Division

Pompano Beach, Florida

Big Time Products Division

Rome, Georgia

ST Fastening Division

Tyler, Texas
Cincinnati, Ohio

Hillman Canada

Pickering, Ontario

Robotic Digital Solutions & Manufacturing

Tempe, Arizona
Boulder, Colorado

Distribution Centers

- Tempe, Arizona
- Bakersfield, California
- Rialto, California
- Jacksonville, Florida
- Rome, Georgia
- Cincinnati, Ohio
- Forest Park, Ohio
- Jonestown, Pennsylvania
- Dallas, Texas
- Pickering, Ontario
- Monterrey, Mexico

